

DATAVIEW

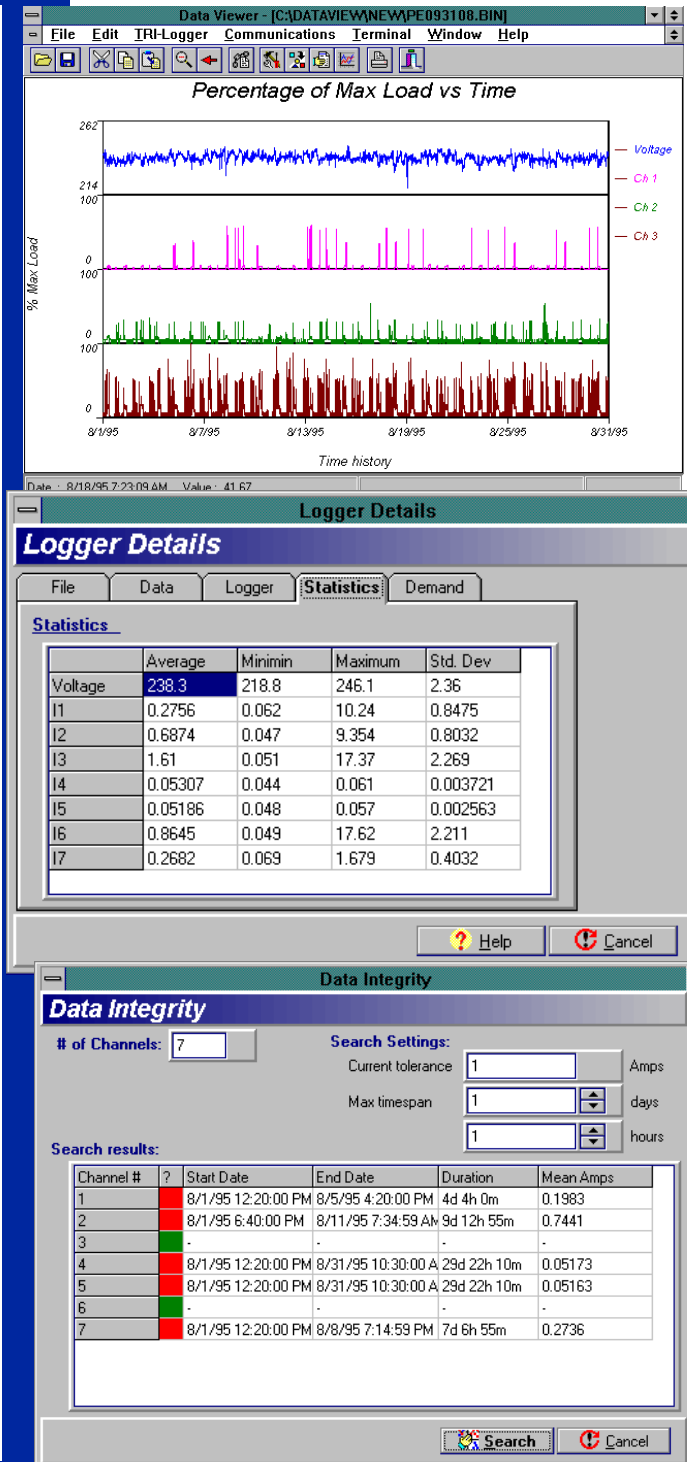
Data File Viewer

DATAVIEW is a PC based graphical file-viewer that provides a user interface to commercial data loggers and facilitates the set-up and display of one or more datalogger channels on the screen.

DATAVIEW can be used to provide channel descriptions, conversions to sensor data, examine data for faulty channels, flat spots or any other defect. This is done graphically and saves the user from spending time examining the text output from a logger or developing their own proprietary software. The software can set up and download data directly from the datalogger.

DATAVIEW can be used to perform basic research and analysis on the data and can be linked to an optional database system.

DATAVIEW is locally developed and supported and can be customized to suit user applications.



Features Overview

User Interface

- ✓ MS Windows Graphical User Interface (GUI).
- ✓ Drop down Windows.
- ✓ Short cut keys.
- ✓ Context sensitive help.
- ✓ Built in cueing (prompting).
- ✓ User manual on-line.

File Formats

- ✓ Automatically detects datalogger format.
- ✓ TRI 5001 logger (V2 & V3).
- ✓ Calmu Logger (initialized for kVA).
- ✓ Netlog 1 (16 channel) logger
- ✓ Datataker
- ✓ Fluke Hydra
- ✓ Additional formats can be added at a later stage.

Display Modes

- ✓ Three independent windows with any combination of channels
- ✓ Overview mode. All of the data can be viewed at once. This is handy for the location of channels events
- ✓ Micro mode. One or more channels can be selected for detailed examination.

Logger Interface

- ✓ Set up and download data directly from the datalogger
- ✓ Define channel descriptions and channel conversions to engineering values eg temperature, pressure

Graphical Display

- ✓ Data can be displayed on separate windows for each channel or overlaid on one common window.
- ✓ User can select any combination of channels up to six in the micro mode.
- ✓ Channels are displayed in different colors for easy identification.
- ✓ A free-hand cursor can be used to display date and value information for any channel.
- ✓ The graph can be zoomed in and out for detailed examination.
- ✓ The channel data is displayed with the description and units selected by the user

Utilities

- ▣ Display the datalogger header details including file details, logger details and statistics.
- ▣ Summary statistics for each channel include average value, minimum value, maximum value and standard deviation.
- ▣ Display of the raw data logger data in a spreadsheet type format.
- ▣ Detection of flat spots.
- ▣ Link to a database file (Contact your dealer for further details).

Reporting and Filing Functions

- ▣ Graphs can be printed to any MS Windows supported printer.
- ▣ Data can be saved to binary format for rapid retrieval and archiving.

Contact us now for your demonstration copy



Your Engineering Solutions Partner

Tel: +27-11-463-3860

Fax: +27-11-463-2591

e-mail: sales@tlc.co.za

Web: www.tlc.co.za