

# NET XIU24 Network Input Unit

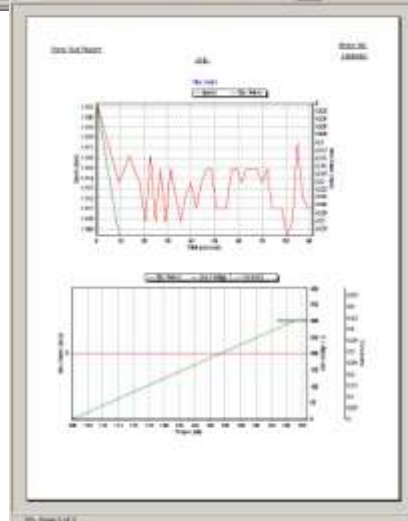
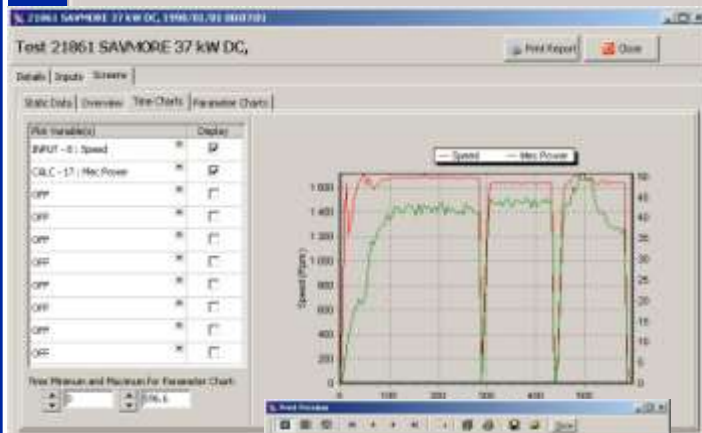
**NET XIU24** is a powerful, easy to use embedded data acquisition and signal conditioning system which can be used to acquire data locally and transmit it over a network to a central station.

In systems where high performance distributed data collection is required, the **NET XIU24** records data from up to 24 input signals. This data can be stored locally on non volatile memory for subsequent retrieval, or transmitted over an industry standard Ethernet link to a central data collection system.

The system is modular and has been designed for rapid installation and repair.

**NET XIU24** is an essential tool for any industrial, scientific or engineering measurement. The system can be used for condition monitoring, process logging and facilities management.

**NET XIU24** is developed and supported in South Africa and can be customized to suit user applications.



# Features Overview

## Acquisition System

- ✓ High reliability embedded processor (RCM2000)
- ✓ Up to 24 simultaneous input channels
- ✓ Common Mode Isolation 2500V rms
- ✓ Acquisition can be saved locally to non-volatile flash memory and downloaded in the event of a communications failure
- ✓ Memory Capacity 8MB expandable to 256MB
- ✓ Up to 4 relay outputs (110V / 2A) for control of external equipment.

## Analog Channel Inputs

- ✓ Data resolution 12 bits (1 in 4096)
- ✓ Input voltage range includes 0-10volts,
- ✓  $\pm 10$  volts and 4-20mA
- ✓ Linearity better than 0.1%

## Digital Channel Inputs

- ✓ Input range 0-250V AC/DC

## Physical Interface

- ✓ Screw mount or DIN rail mount
- ✓ Screw terminal or cage clamp connectors
- ✓ Channels are grouped into sets of 8. Each group uses a plug-in connector for easy diagnostics and module replacement

## Power Supply

- ✓ 12V DC @ 230mA

## Network Interface

Industry Standard Ethernet interface with RJ45 Connector

- ✓ User assignable network ID
- ✓ Standard UDP or FTP protocol can be used
- ✓ Multiple units can be connected to one central data collector
- ✓ Remote setup and diagnostics

## Optional User Interface

- ✓ Up to 4 line / 40 characters
- ✓ 4x4 keypad
- ✓ Serial / GSM / GPRS



*Your Engineering Solutions Partner*

Tel: +27-11-463-3860

Fax: +27-11-463-2591

e-mail: [sales@tlc.co.za](mailto:sales@tlc.co.za)

Web: [www.tlc.co.za](http://www.tlc.co.za)